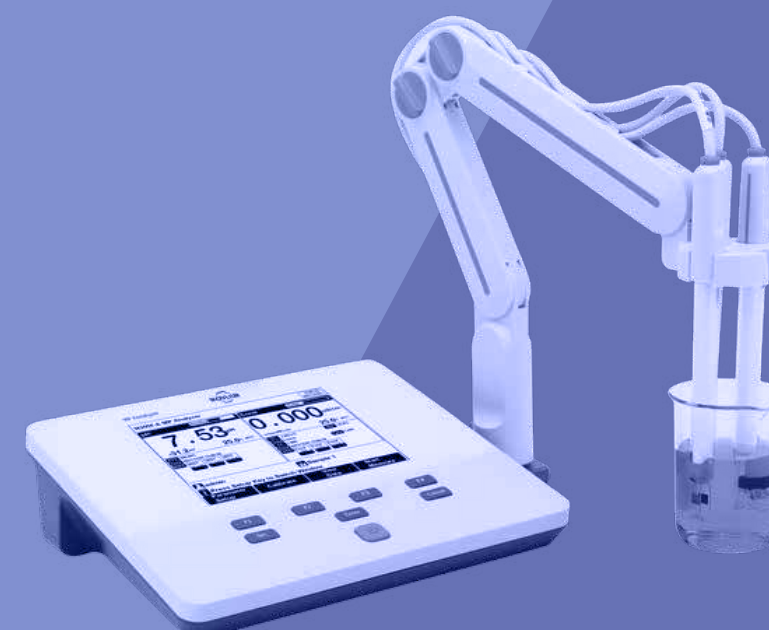


## MULTIPARAMETER METERS



VERSION.2023

# Benchtop Multiparameter Meter

RLIFT-BEP-M300A



## Features

- High resolution LCD display.
- Data Storage 500 sets.
- IP54 waterproof.
- Support for USB or RS-232 communication.



## Description

- The RLIFT-BEP-M300A Benchtop Multi-parameter Analyzer adopts a multi-purpose measurement method, which is suitable for the fields of health disease control, environmental protection, biological agriculture and forestry, water quality analysis, scientific research and institutions of higher learning.

## Features

### General Features

- High resolution LCD display, 5.7 inches.
- Multi-reading feature allows auto-read, timed-read and continuous-read.
- Automatic/Manual temperature compensation ensures accurate results.
- Auto-hold feature senses and locks the measurement endpoint.
- Data Storage 500 sets (GLP-compliant).
- Support for USB or RS-232 communication.
- Reset feature automatically resumes all settings back to factory default options.
- IP54 waterproof.

### pH

- 1-5 points calibration with Standard Recognition.
- Selectable pH buffer groups, including NIST, DIN, GB.
- Automatic electrode diagnosis with pH slope and offset display.

### Ion

- 1-5 points calibration.
- Selectable measurement unit, including  $\mu\text{g/L}$ ,  $\text{mg/L}$ ,  $\text{g/L}$ ,  $\text{mmol/L}$ , PX, etc.
- Multi-measurement modes are supported, including Direct Reading mode, Standard Addition mode, Sample Addition mode and GRAN mode.
- Over 10 methods are built-in, including  $\text{F}^-$ ,  $\text{Cl}^-$ ,  $\text{Br}^-$ ,  $\text{I}^-$ ,  $\text{NO}_3^-$ ,  $\text{BF}_4^-$ ,  $\text{NH}_4^+$ ,  $\text{K}^+$ ,  $\text{Na}^+$ ,  $\text{Ca}^{2+}$ ,  $\text{Cu}^{2+}$ ,  $\text{Pb}^{2+}$ ,  $\text{Ag}^+$  and etc., user-defined method is supported.

### Conductivity

- 1-3 points calibration with Standard Recognition.
- Settable parameters, including cell constant, temperature compensation coefficient and TDS factor.
- Temperature compensation type (none, linear, pure water).



### RLIFT-BEP-M300A Multi-parameter Analyzer 1 Set

- E-301-QC 3 in 1 pH composite electrode 1 Piece
- DJS-1VTC Conductivity electrode 1 Piece
- Standard pH Buffer Solution (50mL) (pH4.01, 7.00, 10.01) 1 Bottle each
- Conductivity standard 1413 $\mu\text{S/cm}$ (50mL) 1 Bottle
- REX-5 electrode stand 1 Set
- European plug model(QD24-0902000-A1)Power adapter DC 9V (Positive inside and negative outside) 1 Piece
- Universal USB cable 1 Piece
- Dust cover (Key function version) 1 Piece
- Operation quick guide 1 Piece
- Instruction manual 1 Piece

Specifications

Model		RLIFT-BEP-M300A
Parameters		pH/EC/ISE/Temp. (mV/ORP/pX/Resistivity/TDS/Sal.)
pH	Range	-2.00 to 20.00pH
	Resolution	0.1, 0.01 pH
	Accuracy	±0.01 pH
	Calibration Points	Up to 5
	Standard Customization	Yes
	Standard Recognition	NIST, GB and DIN buffers
	Slope Limit	Yes
mV	Range	-2000.0 to 2000.0 mV
	Resolution	0.1 mV
	Accuracy	±0.3 mV or ±0.1%
pX	Range	-2.00 to 20.00
	Resolution	0.1, 0.01 pX
	Accuracy	±0.01 pX
	Calibration Points	Up to 5
ISE	Range	1E-9 to 9.999E9
	Unit	mol/L, mmol/L, g/L, mg/L, µg/L, ppm
	Resolution	Up to 4 significant digits
	Accuracy	±0.5%
	Calibration Points	Up to 5
Conduc-tivity	Range	0.000 µS/cm to 1000 mS/cm
	Resolution	0.001 µS/cm minimum, various with range selection
	Accuracy	±1.0% FS
	Reference Temperature	20, 25 °C
	Calibration Points	Up to 3
	Standard Recognition	84µS/cm, 1413µS/cm, 12.88mS/cm
Resistivity	Range	5.00 Ω·cm~20.00 MΩ·cm
	Resolution	0.01 Ω·cm minimum
	Accuracy	±1.0% FS
TDS	Range	0.00ppm~300ppt
	Resolution	0.01mg/L minimum, various with range selection
	Accuracy	±1.0% FS
Salinity	Range	0~80ppt
	Resolution	0.1ppt
	Accuracy	±2ppt

Model		RLIFT-BEP-M300A
Temperature	Range	-5 to 110 °C, 23 to 230 °F
	Unit	°C, °F
	Resolution	0.1
	Accuracy	±0.2
Measurement	Reading Mode	Auto Read (Fast, Medium, Slow), Timed, Continuous
	Reading Prompts	Reading, Stable, Locked
	Temp. Compensation	ATC, MTC
Data manage-ment	Data Storage	500 results each
	GLP Features	Yes
Inputs	pH Electrode	BNC(Q9)
	DO with Temp. Probe	4-pin aviation connector
	Conductivity with Temp. Probe	5-pin aviation connector
Outputs	USB	USB 2.0 flash memory device, PC
	RS 232	printer
Display options	Backlight	Yes
	Auto Shutdown	1~60 min, off
	IP Rating	IP54
	Date and Time	Yes
General	Electricity	AC Adapter, 100~240V AC input, DC9V output
	Dimensions	242×195× 68 mm
	Weight	900g



# Benchtop Multiparameter Meter

BEP-M300F



## pH

- ◆ 1-5 points calibration with Standard Recognition.
- ◆ Selectable pH buffer groups, including NIST, DIN, GB.
- ◆ Automatic electrode diagnosis with pH slope and offset display.

## Conductivity

- ◆ 1-3 points calibration with Standard Recognition.
- ◆ Settable parameters, including cell constant, temperature compensation coefficient and TDS factor.
- ◆ Temperature compensation type (none, linear, pure water).

## Ion

- ◆ 1-5 points calibration.
- ◆ Selectable measurement unit, including  $\mu\text{g/L}$ ,  $\text{mg/L}$ ,  $\text{g/L}$ ,  $\text{mmol/L}$ ,  $\text{PX}$ , etc.
- ◆ Multi-measurement modes are supported, including Direct Reading mode, Standard Addition mode, Sample Addition mode and GRAN mode.
- ◆ Over 10 methods are built-in, including  $\text{F}^-$ ,  $\text{Cl}^-$ ,  $\text{Br}^-$ ,  $\text{I}^-$ ,  $\text{NO}_3^-$ ,  $\text{BF}_4^-$ ,  $\text{NH}_4^+$ ,  $\text{K}^+$ ,  $\text{Na}^+$ ,  $\text{Ca}^{2+}$ ,  $\text{Cu}^{2+}$ ,  $\text{Pb}^{2+}$ ,  $\text{Ag}^+$  and etc., user-defined method is supported.

## DO

- ◆ Support for air-saturated water or zero oxygen calibration.
- ◆ Selectable pressure unit, including kPa, mbar, Torr, Atm.
- ◆ Auto barometric pressure compensation
- ◆ Manual Salinity Factor Correction

## Features



High resolution LCD display, 5.7 inches.  
Smart UI design Best user experience, highly efficient measurement



Support for USB or RS-232 communication.  
Multiple external devices available PC, printer



Automatic identification standard solution  
Fast calibration and more accurate measurement

### Description

The BEP-M300F Benchtop Multi-parameter Analyzer adopts a multi-purpose measurement method, which is suitable for the fields of health disease control, environmental protection, biological agriculture and forestry, water quality analysis, scientific research and institutions of higher learning.

## General Features

IP54 waterproof.

Multi-reading feature allows auto-read, timed-read and continuous-read.

Automatic/Manual temperature compensation ensures accurate results.

Data Storage 500 sets (GLP-compliant).

Reset feature automatically resumes all settings back to factory default options.

Auto-hold feature senses and locks the measurement endpoint.



Specifications

Model		BEP-M300F
Parameters		pH/EC/ISE/DO/Temp. (mV/ORP/pX/Resistivity/TDS/Sal./DO Saturation)
pH	Range	-2.00 to 20.00pH
	Resolution	0.1, 0.01 pH
	Accuracy	±0.01 pH
	Calibration Points	Up to 5
	Standard Customization	Yes
	Standard Recognition	NIST, GB and DIN buffers
	Slope Limit	Yes
mV	Range	-2000.0 to 2000.0 mV
	Resolution	0.1 mV
	Accuracy	±0.3 mV or ±0.1%
pX	Range	-2.00 to 20.00
	Resolution	0.1, 0.01 pX
	Accuracy	±0.01 pX
	Calibration Points	Up to 5
ISE	Range	1E-9 to 9.999E9
	Unit	mol/L, mmol/L, g/L, mg/L, µg/L, ppm
	Resolution	Up to 4 significant digits
	Accuracy	±0.5%
	Calibration Points	Up to 5
Conductivity	Range	0.000 µS/cm to 1000 mS/cm
	Resolution	0.001 µS/cm minimum,various with range selection
	Accuracy	±1.0% FS
	Reference Temperature	20, 25 °C
	Calibration Points	Up to 3
	Standard Recognition	84µS/cm, 1413µS/cm, 12.88mS/cm
Resistivity	Range	5.00 Ω·cm~20.00 MΩ·cm
	Resolution	0.01 Ω·cm minimum
	Accuracy	±1.0% FS
TDS	Range	0.00ppm~300ppt
	Resolution	0.01mg/L minimum, various with range selection
	Accuracy	±1.0% FS
Salinity	Range	0.0~80.0ppt
	Resolution	0.1ppt
	Accuracy	±2ppt

Model		BEP-M300F
Dissolved Oxygen Concentration	Range	0.00 to 20.00 ppm
	Resolution	0.01ppm
	Accuracy	±0.10ppm
	Calibration Points	Air-saturated water or zero point
	Barometric Compensation	Yes
Saturation	Manual Salinity Factor Correction	Yes
	Range	(0.0 to 200.0)%
	Resolution	0.1%
	Accuracy	±2.0%
Temperature	Range	-5 to 110 °C, 23 to 230 °F
	Unit	°C, °F
	Resolution	0.1
	Accuracy	±0.2
Measurement	Reading Mode	Auto Read (Fast, Medium, Slow), Timed, Continuous
	Reading Prompts	Reading, Stable, Locked
	Temp. Compensation	ATC, MTC
Data manage-ment	Data Storage	500 results each
	GLP Features	Yes
Inputs	pH Electrode	BNC(Q9)
	DO with Temp. Probe	4-pin aviation connector
	Conductivity with Temp. Probe	5-pin aviation connector
Outputs	USB	USB 2.0 flash memory device, PC
	RS 232	printer
Display options	Backlight	Yes
	Auto Shutdown	1~60 min, off
	IP Rating	IP54
	Date and Time	Yes
General	Electricity	AC Adapter, 100~240V AC input, DC9V output
	Dimensions	242×195× 68 mm
	Weight	900g



- BEP-M300F Multi-parameter Analyzer 1 Set**
- E-301-QC 3 in 1 pH composite electrode 1 Piece
  - DJS-IVTC Conductivity electrode 1 Piece
  - DO-958-Q Polarographic DO electrode 1 Piece
  - Standard pH Buffer Solution (50mL) (pH4.01, 7.00, 10.01) 1 Bottle each
  - Conductivity standard 1413µS/cm(50mL) 1 Bottle
  - REX-5 electrode stand 1 Set
  - Power adapter DC 9V(European plug model, QD24-0902000-A1) 1 Piece
  - Universal USB cable 1 Piece
  - Dust cover (Key function version) 1 Piece
  - Operation quick guide 1 Piece
  - Instruction manual 1 Piece

# Benchtop Multiparameter Meter

BEP-M500A



### pH

- ◆ 1-6 points calibration with Standard Recognition.
- ◆ Selectable pH buffer groups, including DIN, NIST, USA, MERK, JIS, GB.
- ◆ Support for pH standard group customization.
- ◆ Automatic electrode diagnosis with pH slope and offset display.

### Conductivity

- ◆ 1-5 points calibration with Standard Recognition.
- ◆ Settable parameters, including cell constant, reference temperature (5/10/15/18/20/25°C), temperature compensation coefficient and TDS factor.
- ◆ Temperature compensation type (none, linear, pure water).

### Ion

- ◆ 1-6 points calibration
- ◆ Selectable measurement unit, including  $\mu\text{g/L}$ ,  $\text{mg/L}$ ,  $\text{g/L}$ ,  $\text{mmol/L}$ ,  $\text{pX}$ ,  $\text{ppm}$ , etc.
- ◆ Multi-measurement modes are supported, including Direct Reading mode, Standard Addition mode, Sample Addition mode and GRAN mode.
- ◆ Over 10 methods are built-in, including  $\text{F}^-$ ,  $\text{Cl}^-$ ,  $\text{Br}^-$ ,  $\text{I}^-$ ,  $\text{NO}_3^-$ ,  $\text{BF}_4^-$ ,  $\text{NH}_4^+$ ,  $\text{K}^+$ ,  $\text{Na}^+$ ,  $\text{Ca}^{2+}$ ,  $\text{Cu}^{2+}$ ,  $\text{Pb}^{2+}$ ,  $\text{Ag}^+$  and etc., user-defined method is supported.

## Features



Color High contrast LCD touch-screen, 7.0 inches.



Support for USB or RS-232 communication. Multiple external devices available  
PC, printer



Automatic identification standard solution  
Fast calibration and more accurate measurement

### Description

The BEP-M500A Benchtop Multi-parameter Analyzer adopts a multi-purpose measurement method, which is suitable for the fields of health disease control, environmental protection, biological agriculture and forestry, water quality analysis, scientific research and institutions of higher learning.

## General Features

IP54 waterproof.

Intelligent operation system provides features including user management, calibration management, method management, data management and etc.

Automatic/Manual temperature compensation ensures accurate results.

Multi-reading feature allows auto-read, timed-read and continuous-read.

Data Storage 1000 sets for each parameter (GLP-compliant).  
Data analysis feature helps user review, compare and recalculate results.

Reset feature automatically resumes all settings back to factory default options.

Specifications

Model		BEP-M500A
Parameters		pH/EC/ISE/Temp. (mV/ORP/pX/Resistivity/TDS/Sal.)
pH	Range	-2.000 to 20.000 pH
	Resolution	0.1, 0.01, 0.001pH
	Accuracy	±0.002 pH
	Calibration Points	Up to 6
	Standard Customization	Yes
	Calibration Reminder	Yes
	Standard Recognition	NIST, GB, DIN, USA, MERK, JIS buffers
	Slope Limit	Yes
mV/ORP	Range	-2000.00 to 2000.00 mV
	Resolution	0.1, 0.01 mV
	Accuracy	±0.1 mV or ±0.03% of reading whichever is greater
	EH ORP Mode	Yes
	ORP Calibration Points	1 custom point (relative mV)
pX	Range	-2.000 to 20.000 pX
	Resolution	0.1, 0.01, 0.001 pX
	Accuracy	±0.002 pX
	Calibration Points	Up to 6
ISE	Range	1E-9 to 9.999E9
	Units	mol/L, mmol/L, g/L, mg/L, µg/L, ppm
	Resolution	Up to 4 significant digits
	Accuracy	±0.3%
	Calibration Points	Up to 6
Conductivity	Range	0.000 µS/cm to 2000 mS/cm
	Resolution	0.001 µS/cm minimum,various with range selection
	Accuracy	±0.5% FS
	Reference Temperature	5, 10, 15, 18, 20, 25 °C
	Calibration Points	Up to 5
	Calibration Reminder	Yes
	Standard Recognition	10µS/cm, 84µS/cm, 500µS/cm, 1413µS/cm, 12.88mS/cm
Resistivity	Range	5.00 Ω·cm~100.00 MΩ·cm
	Resolution	0.01 Ω·cm minimum
	Accuracy	±0.5% FS
TDS	Range	0.000~1000ppt
	Resolution	0.001ppm minimum, changed with range
	Accuracy	±0.5%

Model		BEP-M500A
Salinity	Type	NaCl
	Range	0.0~80.0ppt
	Resolution	0.1ppt
	Accuracy	±1ppt
Temperature	Range	-10 to 135 °C, 14 to 275 °F
	Unit	°C, °F
	Resolution	0.1
	Accuracy	±0.1
Measurement	Reading Mode	Auto Read (Fast, Medium, Slow), Timed, Continuous
	Reading Prompts	Reading, Stable, Locked
	Temp. Compensation	ATC, MTC
Data manage-ment	Data Storage	1000 Groups
	GLP Features	Yes
	Log Management	Yes
Inputs	pH Electrode	BNC(Q9)
	DO with Temp. Probe	4-pin aviation connector
	Conductivity with Temp. Probe	5-pin aviation connector
Outputs	USB	USB 2.0 flash memory device, PC
	RS 232	printer, scanner, auto-sampler
Display options	Backlight	Yes
	Auto Shutdown	1~60 min, off
	IP Rating	IP54
	Date and Time	Yes
General	Electricity	AC Adapter, 100~240V AC input, DC24V output
	Dimensions	220×195×68 mm
	Weight	950g



- BEP-M500A Multi-parameter Analyzer 1 Set**
- E-301-QC 3 in 1 pH composite electrode 1 Piece
  - DJS-IVTC Conductivity electrode 1 Piece
  - Standard pH Buffer Solution (50mL) (pH4.01, 7.00, 10.01) 1 Bottle
  - Conductivity standard 1413µS/cm(50mL) 1 Bottle
  - REX-6 electrode stand 1 Set
  - GC65-240270-F Power adapter DC24V 1 Piece
  - Dust cover (Touch screen version) 1 Piece
  - European standard power cord(3VTJ2) 1 Piece
  - Universal USB cable 1 Piece
  - Touch pen (Capacitive screen) 1 Piece
  - Operation quick guide 1 Piece
  - Instruction manual 1 Piece




# Benchtop Multiparameter Meter

RLIFT-BEP-M500T



## Features

-  Color High contrast LCD touchscreen.
-  Data Storage 1000 sets for each parameter.
-  IP54 waterproof.
-  Support for USB or RS-232 communication.



## Description

- The RLIFT-BEP-M500T Benchtop Multi-parameter Analyzer a multi-purpose measurement method, which is suitable for the fields of health disease control, environmental protection, biological agriculture and forestry, water quality analysis, scientific research and institutions of higher learning.

## Features

### General Features

- Color High contrast LCD touchscreen, 7.0 inches.
- Intelligent operation system provides features including user management, calibration management, method management, data management and etc.
- Multi-reading feature allows auto-read, timed-read and continuous-read.
- Automatic/Manual temperature compensation ensures accurate results.
- Data Storage 1000 sets for each parameter (GLP-compliant).
- Data analysis feature helps user review, compare and recalculate results.
- Support for USB or RS-232 communication.
- Reset feature automatically resumes all settings back to factory default options.
- IP54 waterproof.

### pH

- 1-6 points calibration with Standard Recognition.
- Selectable pH buffer groups, including DIN, NIST, USA, MERK, JIS, GB.
- Support for pH standard group customization.
- Automatic electrode diagnosis with pH slope and offset display.

### Ion

- 1-6 points calibration
- Selectable measurement unit, including  $\mu\text{g/L}$ ,  $\text{mg/L}$ ,  $\text{g/L}$ ,  $\text{mmol/L}$ ,  $\text{pX}$ ,  $\text{ppm}$ , etc.
- Multi-measurement modes are supported, including Direct Reading mode, Standard Addition mode, Sample Addition mode and GRAN mode.
- Over 10 methods are built-in, including  $\text{F}^-$ ,  $\text{Cl}^-$ ,  $\text{Br}^-$ ,  $\text{I}^-$ ,  $\text{NO}_3^-$ ,  $\text{BF}_4^-$ ,  $\text{NH}_4^+$ ,  $\text{K}^+$ ,  $\text{Na}^+$ ,  $\text{Ca}^{2+}$ ,  $\text{Cu}^{2+}$ ,  $\text{Pb}^{2+}$ ,  $\text{Ag}^+$  and etc., user-defined method is supported.

### Conductivity

- 1-5 points calibration with Standard Recognition.
- Settable parameters, including cell constant, reference temperature (5/10/15/18/20/25°C), temperature compensation coefficient and TDS factor.
- Temperature compensation type (none, linear, pure water).

### DO

- Support for air-saturated water or zero oxygen calibration.
- Auto barometric pressure compensation.
- Manual Salinity Factor Correction.
- Selectable pressure unit, including  $\text{kPa}$ ,  $\text{mbar}$ ,  $\text{Torr}$ ,  $\text{Atm}$ .



Specifications

Model		RLIFT-BEP-M500T
Parameters		pH/EC/ISE/DO/Temp. (mV/ORP/pX/Resistivity/TDS/Sal./DO Saturation)
pH	Range	-2.000 to 20.000 pH
	Resolution	0.1, 0.01, 0.001pH
	Accuracy	±0.002 pH
	Calibration Points	Up to 6
	Standard Customization	Yes
	Calibration Reminder	Yes
	Standard Recognition	NIST, GB, DIN, USA, MERK, JIS buffers
	Slope Limit	Yes
mV/ORP	Range	-2000.00 to 2000.00 mV
	Resolution	0.1, 0.01 mV
	Accuracy	±0.1 mV or ±0.03% ofreading whichever is greater
	EH ORP Mode	Yes
	ORP Calibration Points	1 custom point (relative mV)
pX	Range	-2.000 to 20.000 pX
	Resolution	0.1, 0.01, 0.001 pX
	Accuracy	±0.002 pX
	Calibration Points	Up to 6
ISE	Range	1E-9 to 9.999E9
	Units	mol/L, mmol/L, g/L, mg/L, µg/L, ppm
	Resolution	Up to 4 significant digits
	Accuracy	±0.3%
	Calibration Points	Up to 6
Conduc-tivity	Range	0.000 µS/cm to 2000 mS/cm
	Resolution	0.001 µS/cm minimum,various with range selection
	Accuracy	±0.5% FS
	Reference Temperature	5, 10, 15, 18, 20, 25 °C
	Calibration Points	Up to 5
	Calibration Reminder	Yes
	Standard Recognition	10 µS/cm, 84 µS/cm, 500 µS/cm, 1413 µS/cm, 12.88 mS/cm
Resistivity	Range	5.00 Ω·cm~100.00 MΩ·cm
	Resolution	0.01 Ω·cm minimum
	Accuracy	±0.5% FS
TDS	Range	0.000~1000 ppt
	Resolution	0.001 ppm minimum, changed with range
	Accuracy	±0.5%FS
Salinity	Type	NaCl
	Range	0.0~80.0ppt
	Resolution	0.1ppt
	Accuracy	±1ppt

Model		RLIFT-BEP-M500T	
Dissolved	Range	0.00 to 99.99 ppm	
Oxygen	Resolution	0.01 ppm	
Concentra-tion -	Accuracy	±0.10ppm, 0.00~50.00ppm	±0.50ppm, 50.0~99.99ppm
	Calibration Reminder	Yes	
Polaro-graphic	Calibration Points	Air-saturated water or zero point	
	Barometric Compensation	Yes	
	Manual Salinity Factor Correction	Yes	
% Saturation -Polaro-graphic	Range	(0.0 to 600)%	
	Resolution	0.10%	
	Accuracy	±2.0%	
Tempera-ture	Range	-10 to 135 °C, 14 to 275 °F	
	Unit	°C, °F	
	Resolution	0.1	
Measure-ment	Accuracy	±0.1	
	Reading Mode	Auto Read (Fast, Medium, Slow), Timed, Continuous	
	Reading Prompts	Reading, Stable, Locked	
Data manage-ment	Temp. Compensation	ATC, MTC	
	Data Storage	1000 Groups	
	GLP Features	Yes	
Inputs	Log Management	Yes	
	pH Electrode	BNC(Q9)	
	DO with Temp. Probe	4-pin aviation connector	
Outputs	Conductivity with Temp. Probe	5-pin aviation connector	
	USB	USB 2.0 flash memory device, PC	
	RS 232	printer, scanner, auto-sampler	
Display options	Backlight	Yes	
	Auto Shutdown	1~60 min, off	
	IP Rating	IP54	
	Date and Time	Yes	
General	Electricity	AC Adapter, 100~240V AC input, DC24V output	
	Dimensions	220×195×68 mm	
	Weight	950g	



- RLIFT-BEP-M500T Multi-parameter Analyzer 1 Set**
- E-301-QC 3 in 1 pH composite electrode 1 Piece
  - DJS-1VTC Conductivity electrode 1 Piece
  - DO-958-Q Polarographic DO electrode 1 Bottle
  - Standard pH Buffer Solution (50mL) (pH4.01, 7.00, 10.01) 1 Bottle each
  - Conductivity standard 1413µS/cm(50mL) 1 Bottle
  - REX-6 electrode stand 1 Set
  - GC65-240270-F Power adapter DC24V 1 Piece
  - Dust cover (Touch screen version) 1 Piece
  - European standard power cord(3VTJ2) 1 Piece
  - Universal USB cable 1 Piece
  - Touch pen (Capacitive screen) 1 Piece
  - Operation quick guide 1 Piece
  - Instruction manual 1 Piece

# Benchtop Multiparameter Meter

## BEP-M600L



### Features

-  Color High contrast LCD touchscreen.
-  Data Storage 1000 sets for each parameter
-  IP54 waterproof.
-  Support for USB or RS-232 communication.



### Description

- The BEP-M600L Benchtop Multi-parameter Analyzer adopts a multi-purpose measurement method, which is suitable for the fields of health disease control, environmental protection, biological agriculture and forestry, water quality analysis, scientific research and institutions of higher learning.

### Features

#### General Features

- Color High contrast LCD touchscreen, 7.0 inches.
- Intelligent operation system provides features including user management, calibration management, method management, data management and etc.
- Multi-reading feature allows auto-read, timed-read and continuous-read.
- Automatic/Manual temperature compensation ensures accurate results.
- Data Storage 1000 sets for each parameter (GLP-compliant).
- Data analysis feature helps user review, compare and recalculate results.
- Support for USB or RS-232 communication.
- Reset feature automatically resumes all settings back to factory default options.
- IP54 waterproof.
- Support for three modules, namely pH/ISE module, conductivity module and dissolved oxygen module.
- Select from three modules to customize the four channels your way.
- Four channels can be configured in any combination.

#### pH

- 1-6 points calibration with Standard Recognition.
- Selectable pH buffer groups, including NIST, DIN, GB.
- Support for pH standard group customization.
- Automatic electrode diagnosis with pH slope and offset display.

#### Ion

- 1-6 points calibration
- Selectable measurement unit, including  $\mu\text{g/L}$ ,  $\text{mg/L}$ ,  $\text{g/L}$ ,  $\text{mmol/L}$ ,  $\text{pX}$ ,  $\text{ppm}$ , etc.
- Multi-measurement modes are supported, including Direct Reading mode, Standard Addition mode, Sample Addition mode and GRAN mode.
- Over 10 methods are built-in, including  $\text{F}^-$ ,  $\text{Cl}^-$ ,  $\text{Br}^-$ ,  $\text{I}^-$ ,  $\text{NO}_3^-$ ,  $\text{BF}_4^-$ ,  $\text{NH}_4^+$ ,  $\text{K}^+$ ,  $\text{Na}^+$ ,  $\text{Ca}^{2+}$ ,  $\text{Cu}^{2+}$ ,  $\text{Pb}^{2+}$ ,  $\text{Ag}^+$  and etc., user-defined method is supported.

#### Conductivity

- 1-5 points calibration with Standard Recognition.
- Settable parameters, including cell constant, reference temperature ( $5/10/15/18/20/25^\circ\text{C}$ ), temperature compensation coefficient and TDS factor.
- Temperature compensation type (none, linear, pure water).

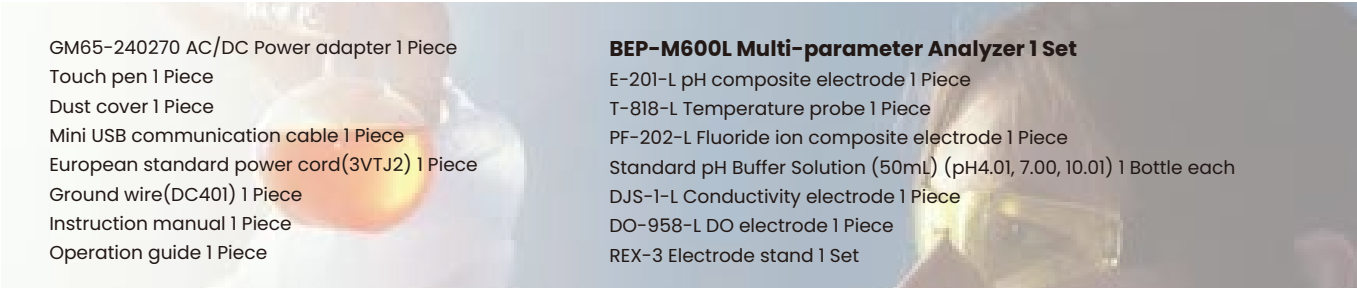
#### DO

- Support for air-saturated water or zero oxygen calibration.
- Auto barometric pressure compensation.
- Manual Salinity Factor Correction.
- Selectable pressure unit, including  $\text{kPa}$ ,  $\text{mbar}$ ,  $\text{Torr}$ ,  $\text{Atm}$ .

Specifications

Model		BEP-M600L
Parameters		pH/EC/ISE/DO/Temp. (mV/ORP/pX/Resistivity/TDS/Sal./DO Saturation)
pH	Range	-2.000 to 20.000 pH
	Resolution	0.1, 0.01, 0.001pH
	Accuracy	±0.002 pH
	Calibration Points	Up to 6
	Standard Customization	Yes
	Calibration Reminder	Yes
	Standard Recognition	NIST, GB, DIN buffers
	Slope Limit	Yes
mV/ORP	Range	-2000.00 to 2000.00 mV
	Resolution	0.1, 0.01 mV
	Accuracy	±0.03% FS
	EH ORP Mode	Yes
	ORP Calibration Points	1~2 custom point (relative mV)
pX	Range	-2.000 to 20.000 pX
	Resolution	0.1, 0.01, 0.001 pX
	Accuracy	±0.002 pX
	Calibration Points	Up to 6
ISE	Range	1.000E-9 to 9.999E9
	Units	mol/L, mmol/L, g/L, mg/L, µg/L
	Resolution	Up to 4 significant digits
	Accuracy	±0.3%
	Calibration Points	Up to 6
Conduc-tivity	Range	0.000 µS/cm to 3000 mS/cm
	Resolution	0.001 µS/cm minimum, various with range selection
	Accuracy	±0.5% FS
	Reference Temperature	5, 10, 15, 18, 20, 25 °C
	Calibration Points	Up to 5
	Standard Recognition	146.5µS/cm, 1408µS/cm, 12.85mS/cm, 111.3mS/cm
Resistivity	Range	5.00 Ω·cm~100.00 MΩ·cm
	Resolution	0.01 Ω·cm minimum
	Accuracy	±0.5% FS
TDS	Range	0.000 mg/L~1000 g/L
	Resolution	0.001ppm minimum, changed with range
	Accuracy	±0.5%FS
Salinity	Type	NaCl%
	Range	(0.00~8.00)%
	Resolution	0.01%
	Accuracy	±0.1%

Model		BEP-M600L
Dissolved	Range	0.00 to 99.99 mg/L
Oxygen	Resolution	0.01 mg/L
Concentra-tion -	Accuracy	±0.1 mg/L
	Calibration Reminder	Yes
Polaro-graphic	Calibration Points	Air-saturated water or zero point
	Barometric Compensation	Yes
	Manual Salinity Factor Correction	Yes
% Saturation	Range	(0.0 to 600)%
-Polaro-graphic	Resolution	0.10%
	Accuracy	±2.0%
Tempera-ture	Range	-5 to 130 °C
	Unit	°C
	Resolution	0.1
Measure-ment	Accuracy	±0.1
	Reading Mode	Auto Read (Fast, Medium, Slow), Timed, Continuous
	Reading Prompts	Reading, Stable, Locked
Data manage-ment	Temp. Compensation	ATC, MTC
	Data Storage	1000 Groups
	GLP Features	Yes
Inputs	Log Management	Yes
	pH Electrode	BNC(Q9)
	DO with Temp. Probe	6-pin Mini-DIN
Outputs	Conductivity with Temp. Probe	8-pin Mini-DIN
	USB	USB 2.0 flash memory device, printer, PC
Display options	RS 232	Yes
	Auto Shutdown	1~60 min, off
	IP Rating	IP54
	Date and Time	Yes
General	Electricity	AC Adapter, 100-240V AC input, DC24V output
	Dimensions	280×280×130 mm
	Weight	2500g



GM65-240270 AC/DC Power adapter 1 Piece

Touch pen 1 Piece

Dust cover 1 Piece

Mini USB communication cable 1 Piece

European standard power cord(3VTJ2) 1 Piece

Ground wire(DC401) 1 Piece

Instruction manual 1 Piece

Operation guide 1 Piece

**BEP-M600L Multi-parameter Analyzer 1 Set**

E-201-L pH composite electrode 1 Piece

T-818-L Temperature probe 1 Piece

PF-202-L Fluoride ion composite electrode 1 Piece

Standard pH Buffer Solution (50mL) (pH4.01, 7.00, 10.01) 1 Bottle each

DJS-1-L Conductivity electrode 1 Piece

DO-958-L DO electrode 1 Piece

REX-3 Electrode stand 1 Set

# Benchtop Multiparameter Meter

BEP-M900 BEP-M901 BEP-M902 BEP-M903 BEP-M904



## Measurement Parameters

- BEP-M900:**  
pH, mV, relative mV, ion concentration, conductivity, TDS, salinity, resistivity, DO, temperature
- BEP-M901:**  
pH, mV, conductivity, TDS, temperature
- BEP-M902:**  
pH, mV, relative mV, conductivity, TDS, salinity, resistivity, temperature
- BEP-M903:**  
pH, mV, relative mV, DO, temperature
- BEP-M904:**  
Conductivity, TDS, salinity, resistivity, DO, temperature

## General Features



Auto-Read function senses and locks the measurement endpoint



Automatic temperature compensation ensures accurate readings over the entire range



Calibration due alarm prompts the user to calibrate the meter regularly



Setup menu allows setting the number of calibration points, resolution, stability criteria, temperature unit, date and time, etc.



Reset function automatically resumes all settings back to the factory defaults



Expanded memory stores or recalls up to 500 data sets  
USB communication interface for data transfer and timed interval readings

## Features

- pH:**  
Multiparameter water quality meter is equipped with a 6.5 inches backlit LCD display  
1 to 5 points calibration with automatic recognition for USA, NIST and DIN buffers  
Automatic electrode diagnosis shows the pH slope and offset
- ORP:**  
1 point offset calibration allows adjusting the displayed value to a known standard  
Relative and absolute millivolt modes ensure the reliable ORP measurements
- Ion Concentration:**  
2 to 5 points calibration, including the 8 concentration points can be selected  
Direction concentration readout simplifies the measurement process  
Automatic electrode diagnosis shows the calibration points and slopes  
Selectable concentration units (ppm, mg/L, mol/L, mmol/L) and ionic valency





**Conductivity/TDS/Salinity/Resistivity:**

1 to 5 points calibration with automatic recognition for conductivity standards

Selectable cell constant, reference temperature, TDS factor, linear and pure water compensations, seawater, and practical salinity measurement modes

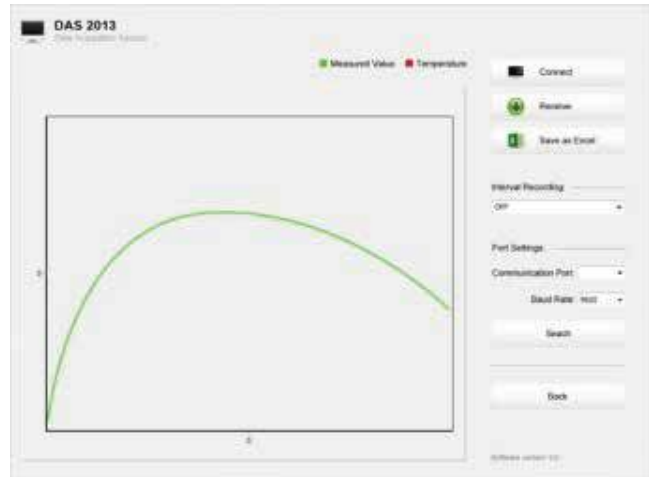
Automatic electrode diagnosis shows the calibration points and factors



**Dissolved Oxygen:**

1 or 2 points calibration using the air-saturated water or zero oxygen solution

Salinity and barometric pressure compensations eliminate the measurement error



**Ordering Information**

**BEP-M900:**  
pH/conductivity/dissolved oxygen electrodes, temperature probe, pH buffer sachets, conductivity standard solutions, DO electrolyte solution, membrane cap, electrode holder, USB cable, and power adapter

**BEP-M901/902:**  
pH/conductivity electrodes, temperature probe, pH buffer sachets, conductivity standard solutions, electrode holder, USB cable, and power adapter

**BEP-M903:**  
pH/dissolved oxygen electrodes, temperature probe, pH buffer sachets, DO electrolyte solution, membrane cap, electrode holder, USB cable, and power adapter

**BEP-M904:**  
Conductivity/dissolved oxygen electrodes, temperature probe, conductivity standard solutions, DO electrolyte solution, membrane cap, electrode holder, USB cable and power adapter



Specifications

Model		BEP-M900	BEP-M901	BEP-M902	BEP-M903	BEP-M904
pH						
Range	-2.000~20.000pH	●	●	●	●	-
Resolution	0.001, 0.01, 0.1pH, selectable	●	●	●	●	-
Accuracy	±0.002pH	●	●	●	●	-
Calibration Points	1 to 5 points	●	●	●	●	-
pH Buffer Options	USA, NIST, DIN, 2 custom buffers	●	●	●	●	-
ORP						
Range	±1999.9mV	●	●	●	●	-
Resolution	0.1, 1mV, selectable	●		●	●	-
Accuracy	±0.2mV	●	●	●	●	-
Calibration Points	1 point	●	-	●	●	-
Ion						
Range	0.001~19999 (depending on the range of ISE)	●	-	-	-	-
Resolution	0.001, 0.01, 0.1, 1	●	-	-	-	-
Accuracy	±0.5% F.S. (monovalent), ±1% F.S. (divalent)	●	-	-	-	-
Measurement Units	ppm, mg/L, mol/L, mmol/L	●	-	-	-	-
Calibration Points	2 to 5 points (0.001, 0.01, 0.1, 1, 10, 100, 1000, 10000)	●	-	-	-	-
Conductivity						
Range	0.01~20.00, 200.0, 2000μS/cm, 20.00, 200.0mS/cm	●	●	●	-	●
Resolution	0.001,0.01,0.1,1	●	●	●	-	●
Accuracy	±0.5% F.S.	●	●	●	-	●
Calibration Points	1 to 5 points	●	●	●	-	●
Calibration Solutions	10μS/cm, 84μS/cm, 1413μS/cm, 12.88mS/cm, 111.8mS/cm	●	●	●	-	●
Temperature Coefficient	Linear (0.0~10.0%/°C), pure water	●	●	●	-	●
Reference Temperature	20/25°C	●	●	●	-	●
Cell Constant	K=0.1, 1, 10 or custom	●	●		-	●

Specifications

Model		BEP-M900	BEP-M901	BEP-M902	BEP-M903	BEP-M904
TDS						
Range	0~10.00, 100.0, 1000ppm, 10.00, 200.0ppt	●	●	●	-	●
Resolution	0.01,0.1,1	●	●	●	-	●
Accuracy	±1% F.S.	●	●	●	-	●
TDS Factor	0.1~1.0 (default 0.5)	●	●	●	-	●
Salinity						
Range	0.00~42.00psu, 0.00~80.00ppt	●	-	●	-	●
Resolution	0.01	●	-	●	-	●
Accuracy	±1% F.S.	●	-	●	-	●
Resistivity						
Range	0.00~20.00MΩ	●	-	●	-	●
Resolution	0.01	●	-	●	-	●
Accuracy	±1% F.S.	●	-	●	-	●
DO						
Range	0.00~20.00mg/L, 0.0~200.0% saturation	●	-	-	●	●
Resolution	0.01mg/L, 0.1%	●	-	-	●	●
Accuracy	±0.2mg/L, ±2.0%	●	-	-	●	●
Calibration Points	1or 2 points	●	-	-	●	●
Barometric Pressure Correction	60.0~112.5kPa/450~850mmHg, manual	●	-	-	●	●
Salinity Correction	0.0~50.0g/L, manual	●	-	-	●	●
General Spec.						
Temperature Compensation	0~100°C/32~212°F, manual or automatic	●	●	●	●	●
Memory	500 data sets, USB communication interface	●	●	●	●	●
Power Requirements	DC5V power adapter	●	●	●	●	●
Dimensions and Weight	210(L)×188(W)×60(H)mm,1.5kg	●	●	●	●	●

# Portable Multiparameter Meter

BEP-M310A



## pH

- ◆ 1-5 points calibration with Standard Recognition.
- ◆ Selectable pH buffer groups, including NIST, DIN, GB.
- ◆ Automatic electrode diagnosis with pH slope and offset display.

## Conductivity

- ◆ 1-3 points calibration with Standard Recognition.
- ◆ Settable parameters, including cell constant, temperature compensation coefficient, and TDS factor.
- ◆ Temperature compensation type (none, linear, pure water).

## Ion

- ◆ 1-5 points calibration.
- ◆ Selectable measurement unit, including  $\mu\text{g/L}$ ,  $\text{mg/L}$ ,  $\text{g/L}$ ,  $\text{mmol/L}$ ,  $\text{pX}$ ,  $\text{ppm}$ , etc.
- ◆ Measurement modes are supported, including Direct Reading mode, Standard Addition mode, Sample Addition mode and GRAN mode.
- ◆ Over 10 methods are built-in, including  $\text{F}^-$ ,  $\text{Cl}^-$ ,  $\text{Br}^-$ ,  $\text{I}^-$ ,  $\text{NO}_3^-$ ,  $\text{BF}_4^-$ ,  $\text{NH}_4^+$ ,  $\text{K}^+$ ,  $\text{Na}^+$ ,  $\text{Ca}^{2+}$ ,  $\text{Cu}^{2+}$ ,  $\text{Pb}^{2+}$ ,  $\text{Ag}^+$  and etc., user-defined method is supported.

## Features



LCD display screen, 3.5 inches.



Support for USB communication. Multiple external devices available  
PC, printer



Tilting stand  
Support better reading and operation



Wristbands Safety hold

## Description

The BEP-M310A Portable Multi-parameter Analyzer adopts a multi-purpose measurement method, which is suitable for the fields of health disease control, environmental protection, biological agriculture and forestry, water quality analysis, scientific research and institutions of higher learning.

## General Features



IP65 waterproof.



Data capacity of up to 500 sets for each parameter (GLP-compliant).



Multi-reading feature allows auto-read, timed-read and continuous-read.



Auto-power off feature effectively extends the battery service life.  
Reset feature automatically resumes all settings back to factory default options.



Automatic/Manual temperature compensation ensures accurate results.  
Auto-hold feature senses and locks the measurement endpoint.

Specifications

Model		BEP-M310A
Parameters		pH/EC/ISE/Temp. (mV/ORP/pX/Resistivity/TDS/Sal.)
pH	Range	-2.00 to 20.00 pH
	Resolution	0.1, 0.01 pH
	Accuracy	±0.01 pH
	Calibration Points	Up to 5
	Standard Customization	Yes
	Standard Recognition	NIST, GB and DIN buffers
	Slope Limit	Yes
mV	Range	-2000.0 to 2000.0 mV
	Resolution	0.1
	Accuracy	±0.3 mV or ±0.1%
pX	Range	-2.00 to 20.00
	Resolution	0.1, 0.01 pX
	Accuracy	±0.01 pX
	Calibration Points	Up to 5
ISE	Range	1E-9 to 9.999E9
	Units	mol/L, mmol/L, g/L, mg/L, µg/L
	Resolution	Up to 4 significant digits
	Accuracy	±0.5%
	Calibration Points	Up to 5
Conductivity	Range	0.000 µS/cm to 500 mS/cm
	Resolution	0.001 µS/cm minimum,various with range selection
	Accuracy	±1.0% FS
	Reference Temperature	20, 25 °C
	Calibration Points	Up to 3
	Standard Recognition	84µS/cm, 1413µS/cm, 12.88mS/cm
Resistivity	Range	5.00 Ω·cm~20.00 MΩ·cm
	Resolution	0.01 Ω·cm minimum
	Accuracy	±1.0% FS
TDS	Range	0.00 ppm~300 ppt
	Resolution	0.01ppm minimum, various with range selection
	Accuracy	±1.0%FS
Salinity	Range	0.0~80.0 ppt
	Resolution	0.1ppt
	Accuracy	±2ppt

Model		BEP-M310A
Temperature	Range	-5 to 110 °C, 23 to 230 °F
	Unit	°C, °F
	Resolution	0.1
	Relative Accuracy	±0.2
Measurement	Reading Mode	Auto Read (Fast, Medium, Slow), Timed, Continuous
	Reading Prompts	Reading, Stable, Locked
	Temp. Compensation	ATC, MTC
Data manage-ment	Data Storage	500 results each
	GLP Features	Yes
Inputs	pH Electrode	BNC(Q9)
Inputs	Conductivity with Temp. Probe	5-pin aviation connector
Outputs	USB	PC, printer
Display options	Backlight	Yes
	Auto Shutdown	300, 600, 1200, 1800, 3600 sec., off
	IP Rating	IP65
	Date and Time	Yes
General	Electricity	Rechargeable Lithium battery, AC Adapter, 100~240V AC input, DC5V output
	Dimensions	80×255×35 mm
	Weight	400g

BEP-M310A Multi-parameter Analyzer 1 Set

- MicroUSB to DB25 printing cable 1 Piece
- Silicone rubber case (Installed on the host) 1 Piece
- Wristband assembly(Small) 1 Piece
- Carrying case(Large) 1 Piece
- Operation quick guide 1 Piece
- Instruction manual 1 Piece

- E-301-QC 3 in 1 pH composite electrode 1 Piece
- DJS-IVTC Conductivity electrode 1P iece
- Standard pH Buffer Solution (50mL) (pH4.01, 7.00, 10.01) 1 Bottle each
- Conductivity standards 1413µS/cm(50mL) 1 Bottle
- Power adapter DC 5V 2A(European plug model, GAT-0502000) 1 Piece
- Electrode holder 2 Pieces
- MicroUSB cable 1 Piece





# Portable Multiparameter Meter

BEP-M310F



The BEP-M310F Portable Multi-parameter Analyzer adopts a multi-purpose measurement method, which is suitable for the fields of health disease control, environmental protection, biological agriculture and forestry, water quality analysis, scientific research and institutions of higher learning.

## Features

- LCD display screen, 3.5 inches.
- Multi-reading feature allows auto-read, timed-read and continuous-read.
- Automatic/Manual temperature compensation ensures accurate results.
- Auto-hold feature senses and locks the measurement endpoint.
- Data capacity of up to 500 sets for each parameter (GLP-compliant).
- Support for USB communication.
- Auto-power off feature effectively extends the battery service life.
- Reset feature automatically resumes all settings back to factory default options.
- IP65 waterproof.

## Features

- ◆ **pH**  
1-5 points calibration with Standard Recognition.  
Selectable pH buffer groups, including NIST, DIN, GB.  
Automatic electrode diagnosis with pH slope and offset display.
- ◆ **Ion**  
1-5 points calibration.  
Selectable measurement unit, including  $\mu\text{g/L}$ ,  $\text{mg/L}$ ,  $\text{g/L}$ ,  $\text{mmol/L}$ ,  $\text{pX}$ ,  $\text{ppm}$ , etc.  
Measurement modes are supported, including Direct Reading mode, Standard Addition mode, Sample Addition mode and GRAN mode.  
Over 10 methods are built-in, including  $\text{F}^-$ ,  $\text{Cl}^-$ ,  $\text{Br}^-$ ,  $\text{I}^-$ ,  $\text{NO}_3^-$ ,  $\text{BF}_4^-$ ,  $\text{NH}_4^+$ ,  $\text{K}^+$ ,  $\text{Na}^+$ ,  $\text{Ca}^{2+}$ ,  $\text{Cu}^{2+}$ ,  $\text{Pb}^{2+}$ ,  $\text{Ag}^+$  and etc., user-defined method is supported.
- ◆ **Conductivity**  
1-3 points calibration with Standard Recognition.  
Settable parameters, including cell constant, temperature compensation coefficient, and TDS factor.  
Temperature compensation type (none, linear, pure water).
- ◆ **DO**  
Support for air-saturated water or zero oxygen calibration.  
Auto barometric pressure compensation  
Manual Salinity Factor Correction  
Selectable pressure unit, including  $\text{kPa}$ ,  $\text{mbar}$ ,  $\text{Torr}$ ,  $\text{Atm}$ .



LCD display screen.  
Data capacity of up to 500 sets for each parameter.  
Support for USB communication.  
IP65 waterproof.

Specifications

Model		BEP-M310F
Parameters		pH/EC/ISE/DO/Temp. (mV/ORP/pX/Resistivity/TDS/Sal./DO Saturation)
pH	Range	-2.00 to 20.00pH
	Resolution	0.1, 0.01 pH
	Accuracy	±0.01 pH
	Calibration Points	Up to 5
	Standard Customization	Yes
	Standard Recognition	NIST, GB and DIN buffers
	Slope Limit	Yes
mV	Range	-2000.0 to 2000.0 mV
	Resolution	0.1
	Accuracy	±0.3 mV or ±0.1%
pX	Range	-2.00 to 20.00
	Resolution	0.1, 0.01 pX
	Accuracy	±0.01 pX
	Calibration Points	Up to 5
ISE	Range	1E-9 to 9.999E9
	Units	mol/L, mmol/L, g/L, mg/L, µg/L
	Resolution	Up to 4 significant digits
	Accuracy	±0.5%
	Calibration Points	Up to 5
Conductivity	Range	0.000 µS/cm to 500 mS/cm
	Resolution	0.001 µS/cm minimum,various with range selection
	Accuracy	±1.0% FS
	Reference Temperature	20, 25 °C
	Calibration Points	Up to 3
	Standard Recognition	84µS/cm, 1413µS/cm, 12.88mS/cm
Resistivity	Range	5.00 Ω·cm~20.00 MΩ·cm
	Resolution	0.01 Ω·cm minimum
	Accuracy	±1.0% FS
TDS	Range	0.00 ppm~300 ppt
	Resolution	0.01ppm minimum, various with range selection
	Accuracy	±1.0%FS

BEP-M310F Multi-parameter Analyzer 1 Set

- Electrode holder 2 Pieces
- MicroUSB cable 1 Piece
- MicroUSB to DB25 printing cable 1 Piece
- Silicone rubber case (Installed on the host) 1 Piece
- Wristband assembly(Small) 1 Piece
- Carrying case(Large) 1 Piece
- Operation quick guide 1 Piece
- Instruction manual 1 Piece

- E-301-QC 3 in 1 pH composite electrode 1 Piece
- DJS-1VTC Conductivity electrode 1 Piece
- DO-958-Q Polarographic DO electrode 1 Piece
- Standard pH Buffer Solution (50mL) (pH4.01, 7.00, 10.01) 1 Bottle each
- Conductivity standards 1413µS/cm(50mL) 1 Bottle
- Power adapter DC 5V 2A(European plug model, GAT-0502000) 1 Piece

Specifications

Model		BEP-M310F
Salinity	Range	0.0~80.0 ppt
	Resolution	0.1ppt
	Accuracy	±2ppt
Dissolved Oxygen Con- centration	Range	0.00 to 50.00ppm
	Resolution	0.01ppm
	Accuracy	±0.1ppm
	Calibration Points	Air-saturated water or zero point
	Barometric Compensation	Yes
	Manual Salinity Factor Correction	Yes
Saturation	Range	(0.0 to 300.0)%
	Resolution	0.1%
	Accuracy	±10.0%
Temperature	Range	-5 to 110 °C, 23 to 230 °F
	Unit	°C, °F
	Resolution	0.1
	Relative Accuracy	±0.2
Measurement	Reading Mode	Auto Read (Fast, Medium, Slow), Timed, Continuous
	Reading Prompts	Reading, Stable, Locked
	Temp. Compensation	ATC, MTC
Data manage- ment	Data Storage	500 results each
	GLP Features	Yes
Inputs	pH Electrode	BNC(Q9)
	DO with Temp. Probe	4-pin aviation connector
	Conductivity with Temp. Probe	5-pin aviation connector
Outputs	USB	PC, printer
Display options	Backlight	Yes
	Auto Shutdown	300, 600, 1200, 1800, 3600 sec., off
	IP Rating	IP65
	Date and Time	Yes
General	Electricity	Rechargeable Lithium battery, AC Adapter, 100-240V AC input, DC5V output
	Dimensions	80×255×35 mm
	Weight	400g



# Portable Multiparameter Meter

## BEP-M310T



### Features

- pH**  
1-5 points calibration with Standard Recognition.  
Selectable pH buffer groups, including NIST, DIN, GB.  
Automatic electrode diagnosis with pH slope and offset display.
- Ion**  
1-5 points calibration.  
Selectable measurement unit, including  $\mu\text{g/L}$ ,  $\text{mg/L}$ ,  $\text{g/L}$ ,  $\text{mmol/L}$ ,  $\text{pX}$ ,  $\text{ppm}$ , etc.  
Measurement modes are supported, including Direct Reading mode, Standard Addition mode, Sample Addition mode and GRAN mode.  
Over 10 methods are built-in, including  $\text{F}^-$ ,  $\text{Cl}^-$ ,  $\text{Br}^-$ ,  $\text{I}^-$ ,  $\text{NO}_3^-$ ,  $\text{BF}_4^-$ ,  $\text{NH}_4^+$ ,  $\text{K}^+$ ,  $\text{Na}^+$ ,  $\text{Ca}^{2+}$ ,  $\text{Cu}^{2+}$ ,  $\text{Pb}^{2+}$ ,  $\text{Ag}^+$  and etc., user-defined method is supported.
- Conductivity**  
1-3 points calibration with Standard Recognition.  
Settable parameters, including cell constant, temperature compensation coefficient, and TDS factor.  
Temperature compensation type (none, linear, pure water).
- DO**  
Support for air-saturated water or zero oxygen calibration.  
Auto barometric pressure compensation  
Manual Salinity Factor Correction  
Selectable pressure unit, including  $\text{kPa}$ ,  $\text{mbar}$ ,  $\text{Torr}$ ,  $\text{Atm}$ .



The BEP-M310T Portable Multi-parameter Analyzer adopts a multi-purpose measurement method, which is suitable for the fields of health disease control, environmental protection, biological agriculture and forestry, water quality analysis, scientific research and institutions of higher learning.

### Features

- 1.1LCD display screen,4.3 inches.
- Multi-reading feature allows auto-read, timed-read and continuous-read.
- Automatic/Manual temperature compensation ensures accurate results.
- Auto-hold feature senses and locks the measurement endpoint.
- Data capacity of up to 500 sets for each parameter (GLP-compliant).
- Support for USB communication.
- Auto-power off feature effectively extends the battery service life.
- Reset feature automatically resumes all settings back to factory default options.
- IP65 waterproof.



LCD display screen.  
Data capacity of up to 500 sets for each parameter.  
Support for USB communication.  
IP65 waterproof.

Specifications

Model		BEP-M310T
Parameters		pH/EC/ISE/DO/Temp. (mV/pX/Resistivity/TDS/Sal./DO Saturation)
pH	Range	-2.00 to 20.00pH
	Resolution	0.1, 0.01 pH
	Accuracy	±0.01 pH
	Calibration Points	Up to 5
	Standard Customization	Yes
	Calibration Reminder	Yes
	Standard Recognition	NIST, GB and DIN buffers
	Slope Limit	Yes
mV	Range	-2000.0 to 2000.0 mV
	Resolution	0.1 mV
	Accuracy	±0.3 mV or ±0.1%
pX	Range	-2.00 to 20.00 pX
	Resolution	0.1, 0.01 pX
	Accuracy	±0.01 pX(±0.01 pX)
	Calibration Points	Up to 5
ISE	Range	1E-9 to 9.999E9
	Units	mol/L, mmol/L, g/L, mg/L, µg/L
	Resolution	Up to 4 significant digits
	Accuracy	±0.5%
	Calibration Points	Up to 5
Conductivity	Range	0.000 µS/cm to 1000 mS/cm
	Resolution	0.001 µS/cm minimum,various with range selection
	Accuracy	±1.0% FS
	Reference Temperature	20, 25 °C
	Calibration Points	Up to 3
	Standard Recognition	84µS/cm, 1413µS/cm, 12.88mS/cm
Resistivity	Range	5.00 Ω ·cm~20.00 MΩ ·cm
	Resolution	0.01Ω ·cm minimum,
	Accuracy	±1.0% FS
TDS	Range	0.00ppm~300ppt
	Resolution	0.01mg/L minimum, 3 significant digits
	Accuracy	±1.0%

BEP-M310T Multi-parameter Analyzer 1 Set

MicroUSB cable 1 Piece  
MicroUSB to DB25 printing cable 1 Piece  
Touch pen (Capacitive screen) 1 Piece  
Silicone rubber case (Installed on the host) 1 Piece  
Wristband assembly(Large) 1 Piece  
Carrying case(Large) 1 Piece  
Operation quick guide 1 Piece  
Instruction manual 1 Piece

E-301-QC 3 in 1 pH composite electrode 1 Piece  
DJS-IVTC Conductivity electrode 1 Piece  
DO-958-Q Polarographic DO electrode 1 Piece  
Standard pH Buffer Solution (50mL) (pH4.01, 7.00, 10.01) 1 Bottle each  
Conductivity standards 1413µS/cm(50mL) 1 Bottle  
Power adapter DC 5V 2A(European plug model, GAT-0502000) 1 Piece  
Electrode holder 2 Pieces

Model		BEP-M310T
Salinity	Range	0.0~80.0ppt
	Resolution	0.1ppt
	Accuracy	±2ppt
Dissolved Oxygen Con- centration	Sensor Type	Polarographic
	Range	0.00 to 50.00 ppm
	Resolution	0.01ppm
	Accuracy	±0.1ppm
	Calibration Points	Air-saturated water or zero point
	Barometric Compensation	Yes
	Manual Salinity Factor Correction	Yes
Saturation	Range	(0.0 to 300.0)%
	Resolution	0.10%
	Accuracy	±2.0%
Temperature	Range	-5 to 110 °C, 23.0 to 230 °F
	Unit	°C, °F
	Resolution	0.1
	Relative Accuracy	±0.2
Measurement	Reading Mode	Auto-Read (Fast, Medium, Slow), Timed, Continuous
	Reading Prompts	Reading, Stable, Locked
	Temp. Compensation	ATC, MTC
Data manage- ment	Data Storage	1000 Groups
	GLP Features	Yes
Inputs	pH Electrode	BNC(Q9)
	DO with Temp. Probe	4-pin aviation connector
	Conductivity with Temp. Probe	5-pin aviation connector
Outputs	USB	PC, printer
	Backlight	Yes
Display options	Auto Shutdown	300, 600, 1200, 1800, 3600sec., off
	IP Rating	IP65
	Date and Time	Yes
General	Electricity	Rechargeable Lithium battery, AC Adapter, 100-240V AC input, DC5V output
	Dimensions	90 x 255 x 40 mm
	Weight	500g





# Portable Multiparameter Meter

BEP-M510A



### pH

- ◆ 1-8 points calibration with Standard Recognition.
- ◆ Selectable pH buffer groups, including USA, NIST, DIN, GB, MERK, JIS.
- ◆ User-defined pH buffer or buffer group is supported.
- ◆ Automatic electrode diagnosis with pH slope and offset display.

### Conductivity

- ◆ 1-5 points calibration automatically recognizes the standard solutions.
- ◆ Settable parameters, including cell constant, reference temperature (5/10/15/18/20/25°C), temperature compensation coefficient and TDS factor.
- ◆ Temperature compensation type (none, linear, pure water).

### Ion

- ◆ 1-6 points calibration.
- ◆ Selectable measurement unit, including  $\mu\text{g/L}$ ,  $\text{mg/L}$ ,  $\text{g/L}$ ,  $\text{mmol/L}$ ,  $\text{pX}$ ,  $\text{ppm}$ , etc.
- ◆ Multi-measurement modes are supported, including Direct Reading mode, Standard Addition mode, Sample Addition mode and GRAN mode.
- ◆ Over 10 methods are built-in, including  $\text{F}^-$ ,  $\text{Cl}^-$ ,  $\text{Br}^-$ ,  $\text{I}^-$ ,  $\text{NO}_3^-$ ,  $\text{BF}_4^-$ ,  $\text{NH}_4^+$ ,  $\text{K}^+$ ,  $\text{Na}^+$ ,  $\text{Ca}^{2+}$ ,  $\text{Cu}^{2+}$ ,  $\text{Pb}^{2+}$ ,  $\text{Ag}^+$  and etc., user-defined method is supported.

## Features



Color High contrast LCD touchscreen, 4.3 inches.



Support for USB communication. Multiple external devices available  
PC, printer



Tilting stand  
Support better reading and operation



Wristbands Safety hold

### Description

The BEP-M510A Portable Multi-parameter Analyzer adopts a multi-purpose measurement method, which is suitable for the fields of health disease control, environmental protection, biological agriculture and forestry, water quality analysis, scientific research and institutions of higher learning.

## General Features

IP65 waterproof.

Intelligent operation system provides features including user management, calibration management, electrode management, method management, data management, Log Management and etc.

Data Storage 1000 sets for each parameter (GLP-compliant).

Data analysis feature helps user review, compare and recalculate results.

Multi-reading feature allows auto-read, timed-read and continuous-read.

Automatic/Manual temperature compensation ensures accurate results.

Auto-hold feature senses and locks the measurement endpoint.

Auto-power off feature effectively extends the battery service life.

Reset feature automatically resumes all settings back to factory default options.

Specifications

Model		BEP-M510A
Parameters		pH/EC/ISE/Temp. (mV/ORP/pX/Resistivity/TDS/Sal.)
pH	Range	-2.000 to 20.000 pH
	Resolution	0.1, 0.01, 0.001pH
	Accuracy	±0.002 pH
	Calibration Points	Up to 8
	Standard Customization	Yes
	Calibration Reminder	Yes
	Standard Recognition	USA, NIST, MERK, JIS, GB and DIN buffers
	Slope Limit	Yes
mV/ORP	Range	-2000.00 to 2000.00 mV
	Resolution	0.1, 0.01 mV
	Accuracy	±0.1 mV or ±0.03%
	EH ORP Mode	Yes
	ORP Calibration Points	1 custom point (relative mV)
pX	Range	-2.000 to 20.000 pX
	Resolution	0.1, 0.01, 0.001 pX
	Accuracy	±0.002 pX
	Calibration Points	Up to 6
ISE	Range	1E-9 to 9.999E9
	Units	mol/L, mmol/L, g/L, mg/L, µg/L
	Resolution	Up to 4 significant digits
	Accuracy	±0.3%
	Calibration Points	Up to 8
Conductivity	Range	0.000 µS/cm to 3000 mS/cm
	Resolution	0.001 µS/cm minimum,various with range selection
	Accuracy	±0.5% FS
	Reference Temperature	5, 10, 15, 18, 20, 25 °C
	Calibration Points	Up to 5
	Calibration Reminder	Yes
	Standard Recognition	10µS/cm, 84µS/cm, 500µS/cm, 1413µS/cm, 12.88mS/cm
Resistivity	Range	5.00 Ω·cm~100.00 MΩ·cm
	Resolution	0.01 Ω·cm minimum
	Accuracy	±0.5% FS
TDS	Range	0.000ppm~1000ppt
	Resolution	0.001ppm minimum, changed with range
	Accuracy	±0.5%FS

Model		BEP-M510A
Salinity	Range	0.0~80.0ppt
	Resolution	0.1ppt
	Accuracy	±1ppt
Temperature	Range	-10 to 135 °C, 14 to 275 °F
	Unit	°C, °F
	Resolution	0.1
	Relative Accuracy	±0.1
Measurement	Reading Mode	Auto Read (Fast, Medium, Slow), Timed, Continuous
	Reading Prompts	Reading, Stable, Locked
	Temp. Compensation	ATC, MTC
Data manage- ment	Data Storage	1000 Groups
	GLP Features	Yes
Inputs	pH Electrode	BNC(Q9)
	DO with Temp. Probe	4-pin aviation connector
	Conductivity with Temp. Probe	5-pin aviation connector
Outputs	USB	USB 2.0 flash memory device, PC, scanner
Display options	Backlight	Yes
	Auto Shutdown	300, 600, 1200, 1800, 3600 sec., off
	IP Rating	IP65
General	Date and Time	Yes
	Electricity	Rechargeable Lithium battery, AC Adapter, 100~240V AC input, DC5V output
	Dimensions	90×255×40 mm
	Weight	500g

BEP-M510A Multi-parameter Analyzer 1 Set

- OTG adapter cable (MicroUSB connector) 1 Piece

Touch pen (Capacitive screen) 1 Piece

Silicone rubber case (Installed on the host) 1 Piece

Wristband assembly(Large) 1 Piece

Carrying case(Large) 1 Piece

Operation quick guide 1 Piece

Instruction manual 1 Piece
- E-301-QC 3 in 1 pH composite electrode 1 Piece

DJS-IVTC Conductivity electrode 1 Piece

Standard pH Buffer Solution (50mL) (pH4.01, 7.00, 10.01) 1 Bottle each

Conductivity standard 1413µS/cm(50mL) 1 Bottle

Power adapter DC 5V 2A(European plug model, GAT-0502000) 1 Piece

Electrode holder 2 Pieces

MicroUSB cable 1 Piece



# Portable Multiparameter Meter

BEP-M510T



The BEP-M510T Portable Multi-parameter Analyzer adopts a multi-purpose measurement method, which is suitable for the fields of health disease control, environmental protection, biological agriculture and forestry, water quality analysis, scientific research and institutions of higher learning.

## Features

- Color High contrast LCD touchscreen, 4.3 inches.
- Intelligent operation system provides features including user management, calibration management, electrode management, method management, data management, Log Management and etc.
- Multi-reading feature allows auto-read, timed-read and continuous-read.
- Automatic/Manual temperature compensation ensures accurate results.
- Auto-hold feature senses and locks the measurement endpoint.
- Data Storage 1000 sets for each parameter (GLP-compliant).
- Data analysis feature helps user review, compare and recalculate results.
- Support for USB communication.
- Auto-power off feature effectively extends the battery service life.
- Reset feature automatically resumes all settings back to factory default options.
- IP65 waterproof.

## Features

- **pH**  
1-8 points calibration with Standard Recognition.  
Selectable pH buffer groups, including USA, NIST, DIN, GB, MERK, JIS.  
User-defined pH buffer or buffer group is supported.  
Automatic electrode diagnosis with pH slope and offset display.
- **Ion**  
1-6 points calibration.  
Selectable measurement unit, including  $\mu\text{g/L}$ ,  $\text{mg/L}$ ,  $\text{g/L}$ ,  $\text{mmol/L}$ ,  $\text{pX}$ ,  $\text{ppm}$ , etc.  
Multi-measurement modes are supported, including Direct Reading mode, Standard Addition mode, Sample Addition mode and GRAN mode.  
Over 10 methods are built-in, including  $\text{F}^-$ ,  $\text{Cl}^-$ ,  $\text{Br}^-$ ,  $\text{I}^-$ ,  $\text{NO}_3^-$ ,  $\text{BF}_4^-$ ,  $\text{NH}_4^+$ ,  $\text{K}^+$ ,  $\text{Na}^+$ ,  $\text{Ca}^{2+}$ ,  $\text{Cu}^{2+}$ ,  $\text{Pb}^{2+}$ ,  $\text{Ag}^+$  and etc., user-defined method is supported.
- **Conductivity**  
1-5 points calibration automatically recognizes the standard solutions.  
Settable parameters, including cell constant, reference temperature ( $5/10/15/18/20/25^\circ\text{C}$ ), temperature compensation coefficient and TDS factor.  
Temperature compensation type (none, linear, pure water).
- **DO**  
Support for air-saturated water or zero oxygen calibration.  
Auto barometric pressure compensation  
Manual Salinity Factor Correction  
Selectable pressure unit, including  $\text{kPa}$ ,  $\text{mbar}$ ,  $\text{Torr}$ ,  $\text{Atm}$ .



Color High contrast LCD touchscreen.  
Data Storage 1000 sets for each parameter.  
Support for USB communication.  
IP65 waterproof.

Specifications

Model		BEP-M510T
Parameters		pH/EC/ISE/DO/Temp. (mV/ORP/pX/Resistivity/TDS/Sal./DO Saturation)
pH	Range	-2.000 to 20.000 pH
	Resolution	0.1, 0.01, 0.001pH
	Accuracy	±0.002 pH
	Calibration Points	Up to 8
	Standard Customization	Yes
	Calibration Reminder	Yes
	Standard Recognition	USA, NIST, MERK, JIS, GB and DIN buffers
	Slope Limit	Yes
mV/ORP	Range	-2000.00 to 2000.00 mV
	Resolution	0.1, 0.01 mV
	Accuracy	±0.1 mV or ±0.03%
	EH ORP Mode	Yes
pX	ORP Calibration Points	1 custom point (relative mV)
	Range	-2.000 to 20.000 pX
	Resolution	0.1, 0.01, 0.001 pX
	Accuracy	±0.002 pX
Calibration Points	Up to 6	
ISE	Range	1E-9 to 9.999E9
	Units	mol/L, mmol/L, g/L, mg/L, µg/L
	Resolution	Up to 4 significant digits
	Accuracy	±0.3%
Calibration Points	Up to 8	
Conductivity	Range	0.000 µS/cm to 3000 mS/cm
	Resolution	0.001 µS/cm minimum,various with range selection
	Accuracy	±0.5% FS
	Reference Temperature	5, 10, 15, 18, 20, 25 °C
	Calibration Points	Up to 5
	Calibration Reminder	Yes
Standard Recognition	10µS/cm, 84µS/cm, 500µS/cm, 1413µS/cm, 12.88mS/cm	
Resistivity	Range	5.00 Ω·cm~100.00 MΩ·cm
	Resolution	0.01 Ω·cm minimum
	Accuracy	±0.5% FS
TDS	Range	0.000ppm~1000ppt
	Resolution	0.001ppm minimum, changed with range
	Accuracy	±0.5%FS

- BEP-M510T Multi-parameter Analyzer 1 Set**  
MicroUSB cable 1 Piece  
OTG adapter cable (MicroUSB connector) 1 Piece  
Touch pen (Capacitive screen) 1 Piece  
Silicone rubber case (Installed on the host) 1 Piece  
Wristband assembly(Large) 1 Piece  
Carrying case(Large) 1 Piece  
Operation quick guide 1 Piece

Instruction manual 1 Piece  
E-301-QC 3 in 1 pH composite electrode 1 Piece  
DJS-IVTC Conductivity electrode 1 Piece  
DO-958-Q Polarographic DO electrode 1 Piece  
Standard pH Buffer Solution (50mL) (pH4.01, 7.00, 10.01) 1 Bottle each  
Conductivity standard 1413µS/cm(50mL) 1 Bottle  
Power adapter DC 5V 2A(European plug model, GAT-0502000) 1 Piece  
Electrode holder 2 Pieces

Model		BEP-M510T
Salinity	Range	0.0~80.0ppt
	Resolution	0.1ppt
	Accuracy	±1ppt
Dissolved Oxygen Con- centration	Sensor Type	Polarographic
	Range	0.00 to 99.99 ppm
	Resolution	0.01ppm
	Accuracy	±0.1ppm (0.00 to 50.00 ppm);±0.5ppm (50.00 to 99.99 ppm)
	Calibration Reminder	Yes
	Calibration Points	Air-saturated water or zero point
	Barometric Compensation	Yes
	Manual Salinity Factor Correction	Yes
Saturation	Range	(0.0 to 600.0)%
	Resolution	0.10%
	Accuracy	±10.0%
Temperature	Range	-10 to 135 °C, 14 to 275 °F
	Unit	°C, °F
	Resolution	0.1
	Relative Accuracy	±0.1
Measurement	Reading Mode	Auto Read (Fast, Medium, Slow), Timed, Continuous
	Reading Prompts	Reading, Stable, Locked
	Temp. Compensation	ATC, MTC
Data manage- ment	Data Storage	1000 Groups
	GLP Features	Yes
Inputs	pH Electrode	BNC(Q9)
	DO with Temp. Probe	4-pin aviation connector
	Conductivity with Temp. Probe	5-pin aviation connector
Outputs	USB	USB 2.0 flash memory device, PC, scanner
Display options	Backlight	Yes
	Auto Shutdown	300, 600, 1200, 1800, 3600 sec., off
	IP Rating	IP65
	Date and Time	Yes
General	Electricity	Rechargeable Lithium battery, AC Adapter, 100~240V AC input, DC5V output
	Dimensions	90×255×40 mm
	Weight	500g





# Portable Multiparameter Meter

BEP-M900P BEP-M901P BEP-M902P BEP-M903P BEP-M904P



## Measurement Parameters

**BEP-M900P:** pH, mV, relative mV, ion concentration, conductivity, TDS, salinity, resistivity, DO, temperature

**BEP-M901P:** pH, mV, conductivity, TDS, temperature

**BEP-M902P:** pH, mV, relative mV, conductivity, TDS, salinity, resistivity, temperature

**BEP-M903P:** pH, mV, relative mV, DO, temperature

**BEP-M904P:** Conductivity, TDS, salinity, resistivity, DO, temperature

## General Features



Calibration due alarm prompts user to calibrate the meter regularly



Multi-mode power scheme (batteries, power adapter and USB port) ensures that using



Expanded memory stores or recalls up to 500 data sets



Setup menu allows setting the number of calibration points, resolution, stability criteria, temperature unit, date and time, etc.



USB communication interface is easy to transfer data to PC



Reset function automatically resumes all settings back to the factory defaults



Automatic temperature compensation ensures accurate readings over the entire range  
Auto-Read function senses and locks the measurement endpoint  
Auto-Power Off effectively conserves battery life

## Features

### pH:

Multi parameter water quality meter is equipped with a 3.5 inches backlit LCD display

1 to 5 points calibration with automatic recognition for USA, NIST and DIN buffers

Automatic electrode diagnosis shows the pH slope and offset

### ORP:

1 point offset calibration allows adjusting the displayed value to a known standard

Relative and absolute millivolt modes ensure the reliable ORP measurements

### Dissolved Oxygen:

1 or 2 points calibration using the air-saturated water or zero oxygen solution

Salinity and barometric pressure compensations eliminate the measurement error

### Ion Concentration:

2 to 5 points calibration, including the 8 concentration points can be selected

Direct ion concentration readout simplifies the measurement process

Automatic electrode diagnosis shows the calibration points and slopes

Selectable concentration units (ppm, mg/L, mol/L, mmol/L) and ionic valency

### Conductivity/TDS/Salinity/Resistivity:

1 to 5 points calibration with automatic recognition for conductivity standards

Selectable cell constant, reference temperature, TDS factor, linear and pure water

compensations, seawater and practical salinity measurement modes

Automatic electrode diagnosis shows the calibration points and factors



Specifications

Model		BEP-M900P	BEP-M901P	BEP-M902P	BEP-M903P	BEP-M904P
pH						
Range	-2.000~20.000pH	●	●	●	●	-
Resolution	0001,0.01,0.1pH, selectable	●	●	●	●	-
Accuracy	0.002pH	●	●	●	●	-
Calibration Points	1 to 5 points	●	●	●	●	-
pHBuffer Options	USA, NIST, DIN, 2 custom buffers	●	●	●	●	-
ORP						
Range	±1999.9mV	●	●	●	●	-
Resolution	0.1, 1mV, selectable	●	●	●	●	-
Accuracy	±0.2mV	●	●	●	●	-
Calibration Points	1 point	●	-	●	●	-
Ion						
Range	0.001~19999 (depending on the range of ISE)	●	-	-	-	-
Resolution	0.001, 0.01, 0.1, 1	●	-	-	-	-
Accuracy	±0.5% F.S. (monovalent), ±1% F.S. (divalent)	●	-	-	-	-
Measurement Units	ppm, mg/L, mol/L, mmol/L	●	-	-	-	-
Calibration Points	2 to 5 points (0.001, 0.01, 0.1, 1, 10, 100, 1000, 10000)	●	-	-	-	-
Conductivity						
Range	0.01~20.00, 200.0, 2000μS/cm, 20.00, 200.0mS/cm	●	●	●	-	●
Resolution	0001,0.01,0.1	●	●	●	-	●
Accuracy	±0.5% F.S.	●	●	●	-	●
Calibration Points	1 to 5 points	●	●	●	-	●
Calibration Solutions	10μS/cm, 84μS/cm, 1413μS/cm, 12.88mS/cm, 111.8mS/cm	●	●	●	-	●
Temperature Coefficient	Linear(0.0~10.0%/°C).pure water	●	●	●	-	●
Reference Temperature	20/25°C	●	●	●	-	●
Cell Constant	K=0.1, 1, 10 or custom	●	●	●	-	●

Specifications

Model		BEP-M900P	BEP-M901P	BEP-M902P	BEP-M903P	BEP-M904P
TDS						
Range	0~10.00, 100.0, 1000ppm, 10.00, 200.0ppt	●	●	●	-	●
Resolution	001,0.1,1	●	●	●	-	●
Accuracy	±1% F.S.	●	●	●	-	●
TDS Factor	0.1~1.0 (default 0.5)	●	●	●	-	●
Salinity						
Range	0.00~42.00psu, 0.00~80.00ppt	●	-	●	-	●
Resolution	0.01	●	-	●	-	●
Accuracy	±1% F.S.	●	-	●	-	●
Resistivity						
Range	0.00~20.00MΩ	●	-	●	-	●
Resolution	0.01	●	-	●	-	●
Accuracy	±1% F.S.	●	-	●	●	●
DO						
Range	0.00~20.00mg/L, 0.0~200.0% saturation	●	-	-	●	●
Resolution	001mg/L,0.1%	●	-	-	●	●
Accuracy	±0.2mg/L, ±2.0%	●	-	-	●	●
Calibration Points	1 or 2 points	●	-	-	●	●
Barometric Pressure Correction	60.0~112.5kPa/450~850mmHg, manual	●	-	-	●	●
Salinity Correction	0.0~50.0g/L, manual	●	-	-	●	●
General Spec.						
Temperature Compensation	0~100°C/32~212°F, manual or automatic	●	●	●	●	●
Memory	500 data sets, USB communication interface	●	●	●	●	●
Power Requirements	3× 1.5V AA batteries or DC5V power adapter	●	●	●	●	●
Dimensions and Weight	170(L)× 85 (W)×30(H)mm, 300g	●	●	●	●	●